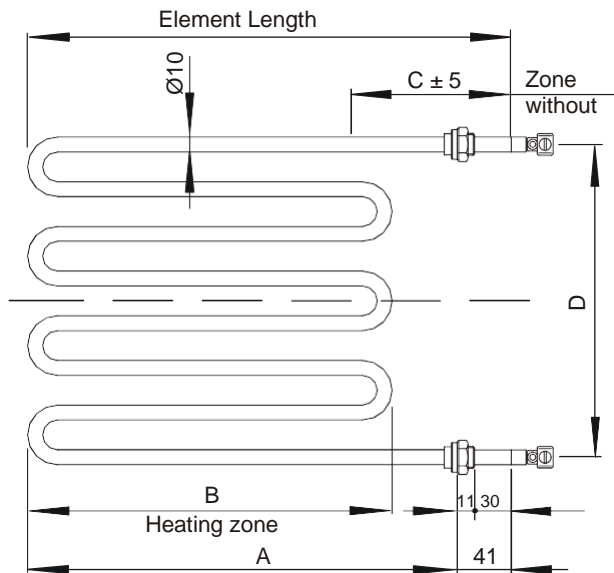




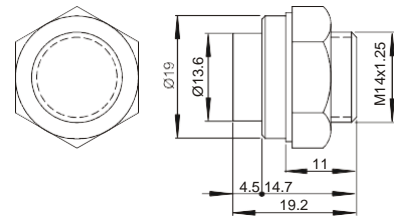
Standard models, M8GRK Range Electric Heating Elements

Heating element for oven and stove

Code	Sizes in mm				Element Length	Watts	W/cm ²	Electricfor construction thermal class	Weight in kg
	A	B	C	D					
M8GRK1	250	236	100	170	291	1000	1.8	T-700-T	0.75
M8GRK1.5	251	237	100	175	292	1500	2.6	T-700-T	0.75



Sizes of the M14x1'25 stapled fitting



Relationship between the maximum ambient temperature of the oven or stove in the heating elements zone (where a safety sensor should be placed).

W/cm ²	Air at rest	Recirculated Air at 1 m / sec. in heating elements zone	Recirculated recirculated at 2 m/sec. in heating elements zone	Recirculated Air at 3 m/sec. in heating elements zone	Recirculated air at 4 m/sec. in heating elements zone
1.8	450 °C.	500 °C	530 °C	560 °C	580 °C
2.5 to 3.1	350 °C.	380 °C	430 °C	470 °C	500 °C
4.1 to 4.7	Temp. env. max. 80 °C.	175 °C	275 °C	340 °C	400 °C
Maximum environment temperature in heating elements zone.					

IMPORTANT NOTE: The environment temperature inside the oven or stove chamber will always be lower by 25-350 °C of the heating elements zone depending on the good air circulation, the material loads and their frequency